



# *HVAC PARTS*

*Reliably Comfortable.™* 



### Mainline Igniter - Hot Surface Ignition (HSI - Silicon Carbide)

**PRODUCT FEATURES**

- HVAC Hot Surface Ignition
- Element Material: Silicon Carbide
- Ignitor Type: Hot Surface
- Wire Length (In.): 5-1/4
- Ignition Temperature (F): 2000
- Heat-Up Time (s): 34



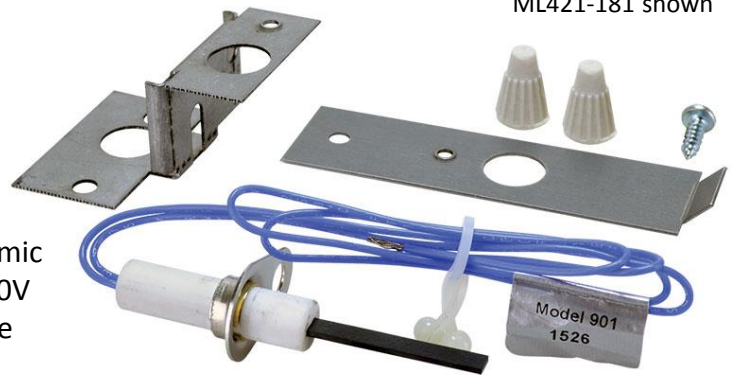
ML62-22868-93-1PK shown

✓ To Submit	Part No.	Description
	ML62-22868-93-1PK	Hot Surface

### Mainline Duraglo Universal Igniter Kit (HSI - Silicon Nitride)

**PRODUCT FEATURES**

- HVAC Universal Igniter Kit
- Ignitor Type: Hot Surface
- Element Material: Silicon Nitride
- Heat-Up Time (s): 8
- Ignition Temperature (F): 1800
- Wire Length (in.): 13 Includes: Extension Bracket, Ceramic Wire Nuts (2), Universal "Snap" Mounting Bracket, 120V DuraGlo™ Silicon Nitride Igniter with 250 C-Rated Wire Leads, Self-Tapping Mounting Screw



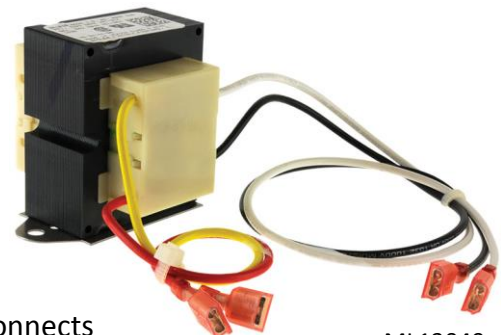
ML421-181 shown

✓ To Submit	Part No.	Description
	ML421-181	Universal

### Mainline Transformer (Channel Mount - Two Hole) 120-24V 60HZ 40VA

**PRODUCT FEATURES**

- HVAC Transformer
- Primary Voltage (V): 120
- Secondary Voltage (V): 24
- Capacity (VA): 40
- Frequency (Hz): 60
- Mounting: Channel 2 Hole
- Two Hole Spacing: 2-13/16"
- Electrical Connections: Leads with 1/4 in. insulated female quick connects



ML13049 shown

✓ To Submit	Part No.	Description
	ML46-24124-06	2 HOLE

## Mainline Transformer (Channel Mount - Two Hole) 120/208/240-24V 50/60HZ 40VA

### PRODUCT FEATURES

- HVAC Transformer
- Primary Voltage (V): 120
- Primary Voltage (V): 208
- Primary Voltage (V): 230
- Secondary Voltage (V): 24
- Capacity (VA): 40
- Frequency (Hz): 50
- Frequency (Hz): 60
- Mounting: Channel 2 Hole
- Two Hole Spacing (in.): 3-1/8
- Electrical Connections: Leads with stripped ends
- Power Limiting: Class 2



ML46-25107-04 shown

✓ To Submit	Part No.	Description
	ML46-25107-04	2 HOLE

## Mainline Transformer (Channel Mount - Two Hole) 208/240-24V 60HZ 40VA

### PRODUCT FEATURES

- HVAC Transformer
- Primary Voltage (V): 208
- Primary Voltage (V): 230
- Secondary Voltage (V): 24
- Capacity (VA): 40
- Frequency (Hz): 60
- Mounting: Channel 2 Hole
- Two Hole Spacing (in.): 2-13/16
- Electrical Connections: 1/4 in. male quick connects
- Power Limiting: Class 2



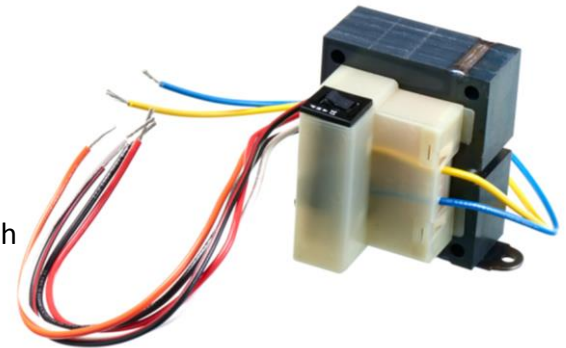
ML46-101905-01 shown

✓ To Submit	Part No.	Description
	ML46-101905-01	2 HOLE

## Mainline Transformer (Channel Mount - Two Hole) 120/208/240-24V 50/60HZ 75VA

### PRODUCT FEATURES

- HVAC Transformer
- Primary Voltage (V): 120
- Primary Voltage (V): 208
- Primary Voltage (V): 230
- Primary Voltage (V): 460
- Secondary Voltage (V): 24
- Capacity (VA): 75
- Frequency (Hz): 50
- Frequency (Hz): 60
- Mounting: Channel 2 Hole
- Two Hole Spacing (in.): 3-1/8
- Electrical Connections: Leads with stripped ends
- Power Limiting: Class 2



ML46-25107-12 shown

✓ To Submit	Part No.	Description
	ML46-25107-12	2 HOLE

## Mainline Contactor - 30A 1-Pole (24V coil)

### PRODUCT FEATURES

- HVAC Contactor
- Coil Voltage (VAC): 24
- Number of Poles: 1
- Motor FLA Rating 230V (A): 30
- Motor LRA Rating 230V (A): 180
- Resistive Rating 230V (A): 40
- Motor FLA Rating 460V (A): 30
- Motor LRA Rating 460V (A): 150
- Resistive Rating 460V (A): 40
- Motor FLA Rating 575V (A): 30
- Motor LRA Rating 575V (A): 120
- Resistive Rating 575V (A): 40



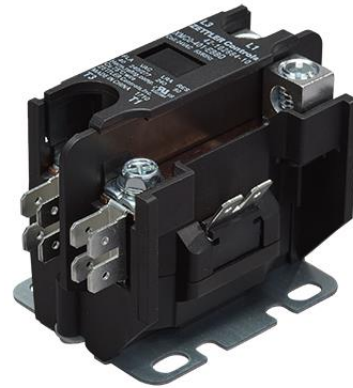
ML425066 shown

✓ To Submit	Part No.	Description
	ML425066	1 POLE

## Mainline Contactor - 40A 1-Pole (24V coil)

### PRODUCT FEATURES

- HVAC Contactor
- Coil Voltage (VAC): 24
- Number of Poles: 1
- Motor FLA Rating 230V (A): 40
- Motor LRA Rating 230V (A): 240
- Resistive Rating 230V (A): 50
- Resistive Rating 460V (A): 50
- Resistive Rating 575V (A): 50



ML42-102664-10 shown

✓ To Submit	Part No.	Description
	ML42-102664-10	1 POLE

## Mainline Contactor - 30A 2-Pole (24V coil)

### PRODUCT FEATURES

- HVAC Contactor
- Coil Voltage (VAC): 24
- Number of Poles: 2
- Motor FLA Rating 230V (A): 30
- Motor LRA Rating 230V (A): 180
- Resistive Rating 230V (A): 40
- Motor FLA Rating 460V (A): 30
- Motor LRA Rating 460V (A): 150
- Resistive Rating 460V (A): 40
- Motor FLA Rating 575V (A): 30
- Motor LRA Rating 575V (A): 120
- Resistive Rating 575V (A): 40



ML425068 shown

✓ To Submit	Part No.	Description
	ML425068	2 POLE

## Mainline Contactor - 40A 2-Pole (24V coil)

### PRODUCT FEATURES

- HVAC Contactor
- Coil Voltage (VAC): 24
- Number of Poles: 2
- Motor FLA Rating 230V (A): 40
- Motor LRA Rating 230V (A): 240
- Resistive Rating 230V (A): 50
- Motor FLA Rating 460V (A): 40
- Motor LRA Rating 460V (A): 200
- Resistive Rating 460V (A): 50
- Motor FLA Rating 575V (A): 40
- Motor LRA Rating 575V (A): 120
- Rating at 575V (A): 50



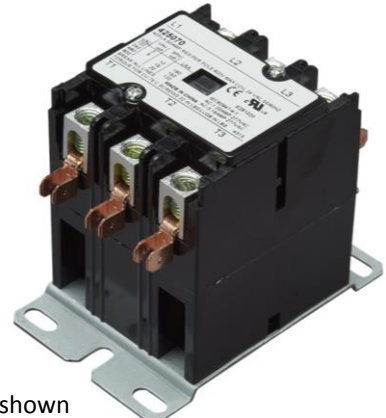
ML425069 shown

✓ To Submit	Part No.	Description
	ML425069	2 POLE

## Mainline Contactor - 40A 3-Pole (24V coil)

### PRODUCT FEATURES

- HVAC Contactor
- Coil Voltage (VAC): 24
- Number of Poles: 3
- Motor FLA Rating 230V (A): 40
- Motor LRA Rating 230V (A): 240
- Resistive Rating 230V (A): 50
- Motor FLA Rating 460V (A): 40
- Motor LRA Rating 460V (A): 200
- Resistive Rating 460V (A): 50
- Motor FLA Rating 575V (A): 40
- Motor LRA Rating 575V (A): 160
- Resistive Rating 575V (A): 50



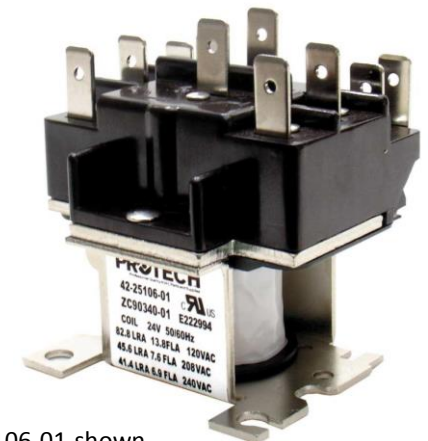
ML425070 shown

✓ To Submit	Part No.	Description
	ML425070	3 POLE

## Mainline Relay - Open Coil DPDT-NO/NC 24VAC

### PRODUCT FEATURES

- HVAC Control Relay
- Sealed Case
- Contact Configuration: SPDT
- Contact Bias: NO / NC
- Coil Voltage (VAC): 24
- Coil Frequency (Hz): 50/60
- FLA at 120V (A): 14
- FLA at 230V (A): 8
- LRA at 120V (A): 84
- LRA at 230V (A): 48
- Resistive Rating at 277V (A): 25
- Terminal Connections: 1/4 in. Quick Connects



ML42-25106-01 shown

✓ To Submit	Part No.	Description
	ML42-25106-01	OPEN COIL



### Mainline Relay - Sealed Case SPST-NO 24VAC Coil

**PRODUCT FEATURES**

- HVAC Control Relay
- Sealed Case
- Contact Configuration: SPST
- Contact Bias: NO
- Coil Voltage (VAC): 24
- Coil Frequency (Hz): 50/60
- FLA at 120V (A): 12
- FLA at 230V (A): 8
- FLA at 277V (A): 7
- LRA at 120V (A): 60
- LRA at 230V (A): 48
- LRA at 277V (A): 42
- Terminal Connections: 1/4 in. Quick Connects



ML42-21571-08 shown

✓ To Submit	Part No.	Description
	ML42-21571-08	SEALED CASE

### Mainline Relay - Small Sealed Case SPDT-NO/NC 24VAC Coil

**PRODUCT FEATURES**

- HVAC Control Relay
- Small Sealed Case
- Contact Configuration: SPDT
- Contact Bias: NO / NC
- Coil Voltage (VAC): 24
- HP Rating at 120V: 1 (NO), 1/4 (NC)
- HP Rating at 220V: 2 (NO), 1/2 (NC)



ML42-23114-06 shown

✓ To Submit	Part No.	Description
	ML42-23114-06	SMALL SEALED CASE

### Mainline Relay - Sealed Case SPDT-NO/NC 24VAC Coil

**PRODUCT FEATURES**

- HVAC Control Relay
- Sealed Case
- Contact Configuration: SPDT
- Contact Bias: NO / NC
- Coil Voltage (VAC): 24
- Coil Frequency (Hz): 50/60
- FLA at 120V (A): 14
- FLA at 230V (A): 8
- LRA at 120V (A): 84
- LRA at 230V (A): 48
- Resistive Rating at 277V (A): 25
- Terminal Connections: 1/4 in. Quick Connects



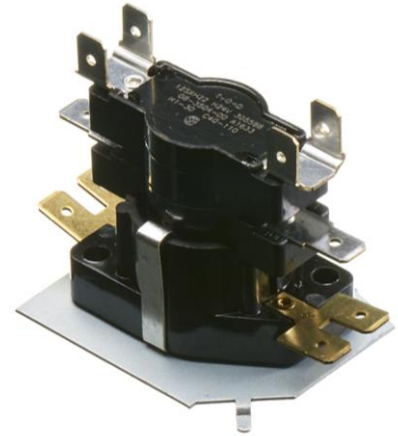
ML42-25104-06 shown

✓ To Submit	Part No.	Description
	ML42-25104-06	SEALED CASE

**Mainline Heat Sequencing Relay - Flush Mount Plate  
- 24V DPST - NO 2 POLE 1-30/1-30**

**PRODUCT FEATURES**

- HVAC Sequencing Relay
- Mounting: Flush Mount Plate w/Mounting Hole & Tab
- Heater Wattage/ Power Consumption: 24 VAC/.10A - .18A steady state/.35 - 1.0 amps peak for 0.8 sec.
- Heater Voltage (V): 24
- Contact Configuration: DPST - NO
- No. of Poles: 2
- On Timing - Pole 1 (seconds): 1-30
- On Timing - Pole 2 (seconds): 1-30
- Off Timing - Pole 1 (seconds): 40-110
- Off Timing - Pole 2 (seconds): 40-110
- Connections: 1/4 in. Quick Connects
- Motor FLA at 120V (A): Pole 1: 14 Pole 2: 14
- Motor LRA at 120V (A): Pole 1: 72 Pole 2: 72
- Pilot Duty Rating at 120V (VA): Pole 1: 125 Pole 2: 125
- Resistive Rating at 120V (A): Pole 1: 25 Pole 2: 25



MLPD425118 shown

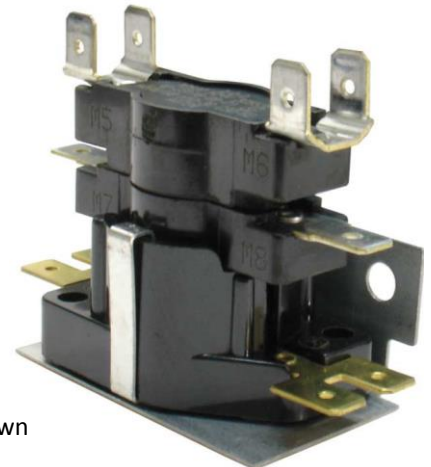
- Motor FLA at 230V (A): Pole 1: 7 Pole 2: 7
- Motor LRA at 230V (A): Pole 1: 42 Pole 2: 42
- Pilot Duty Rating at 230V (VA): Pole 1: 125 Pole 2: 125
- Resistive Rating at 230V (A): Pole 1: 25 Pole 2: 25
- Motor FLA at 460V (A): Pole 1: 4 Pole 2: 4
- Motor LRA at 460V (A): Pole 1: 24 Pole 2: 24
- Pilot Duty Rating at 460V (VA): Pole 1: 125 Pole 2: 125
- Resistive Rating at 460V (A): Pole 1: 12.5 Pole 2: 12.5

✓ To Submit	Part No.	Description
	MLPD425118	2 POLE

**Mainline Heat Sequencing Relay - Angle Bracket w/2  
Mounting Holes - 24V DPST - NO 2 POLE 10-40/30-60**

**PRODUCT FEATURES**

- HVAC Sequencing Relay
- Mounting: Angle Bracket WITH Two Mounting Holes
- Heater Wattage/ Power Consumption: 24 VAC / 0.2A steady state / 0.55A maximum
- Heater Voltage (V): 24
- Contact Configuration: DPST - NO
- No. of Poles: 2
- On Timing - Pole 1 (seconds): 10-30
- On Timing - Pole 2 (seconds): 10-30
- Off Timing - Pole 1 (seconds): 30-60
- Off Timing - Pole 2 (seconds): 30-60
- Connections: 1/4 in. Quick Connects
- Motor FLA at 120V (A): Pole 1: 14 Pole 2: 14
- Motor LRA at 120V (A): Pole 1: 72 Pole 2: 72
- Pilot Duty Rating at 120V (VA): Pole 1: 125 Pole 2: 125
- Resistive Rating at 120V (A): Pole 1: 25 Pole 2: 25



ML42-23116-08 shown

- Motor FLA at 230V (A): Pole 1: 7 Pole 2: 7
- Motor LRA at 230V (A): Pole 1: 42 Pole 2: 42
- Pilot Duty Rating at 230V (VA): Pole 1: 125 Pole 2: 125
- Resistive Rating at 230V (A): Pole 1: 25 Pole 2: 25
- Motor FLA at 460V (A): Pole 1: 3 Pole 2: 3
- Motor LRA at 460V (A): Pole 1: 18 Pole 2: 18
- Pilot Duty Rating at 460V (VA): Pole 1: 125 Pole 2: 125
- Resistive Rating at 460V (A): Pole 1: 12.5 Pole 2: 12.5

✓ To Submit	Part No.	Description
	ML42-23116-08	2 POLE

**Mainline Heat Sequencing Relay - Angle Bracket w/2 Mounting Holes - 24V TPST - NO 3 POLE 10-30/10-30/10-30**

**PRODUCT FEATURES**

- HVAC Sequencing Relay
- Mounting: Angle Bracket WITH Two Mounting Holes
- Heater Wattage/ Power Consumption: 24 VAC / 0.2A steady state / 0.55A maximum
- Heater Voltage (V): 24
- Contact Configuration: TPST - NO
- No. of Poles: 3
- On Timing - Pole 1 (seconds): 10-30
- On Timing - Pole 2 (seconds): 10-30
- On Timing - Pole 3 (seconds): 10-30
- Off Timing - Pole 1 (seconds): 90-150
- Off Timing - Pole 2 (seconds): 30-60
- Off Timing - Pole 3 (seconds): 30-60
- Connections: 1/4 in. Quick Connects
- Motor FLA at 120V (A): Pole 1: 7 Pole 2: 7 Pole 3: 7
- Motor LRA at 120V (A): Pole 1: 42 Pole 2: 42 Pole 3: 42
- Pilot Duty Rating at 120V (VA): Pole 1: 125 Pole 2: 125 Pole 3: 125
- Resistive Rating at 120V (A): Pole 1: 25 Pole 2: 25 Pole 3: 25
- Motor FLA at 230V (A): Pole 1: 7 Pole 2: 7 Pole 3: 7
- Motor LRA at 230V (A): Pole 1: 42 Pole 2: 42 Pole 3: 42
- Pilot Duty Rating at 230V (VA): Pole 1: 125 Pole 2: 125 Pole 3: 125
- Resistive Rating at 230V (A): Pole 1: 25 Pole 2: 25 Pole 3: 25
- Motor FLA at 460V (A): Pole 1: 3 Pole 2: 3 Pole 3: 3



ML42-23116-07 shown

- Motor LRA at 460V (A): Pole 1: 18 Pole 2: 18 Pole 3: 18
- Pilot Duty Rating at 460V (VA): Pole 1: 125 Pole 2: 125 Pole 3: 125
- Resistive Rating at 460V (A): Pole 1: 12.5 Pole 2: 12.5 Pole 3: 12.5

✓ To Submit	Part No.	Description
	ML42-23116-07	3 POLE

**Mainline Start Capacitor - 370V Single Oval**

**PRODUCT FEATURES**

- HVAC Start Capacitor
- Voltage: 330 Volts
- 288-106 MFD UF



ML43-17075-04 shown

✓ To Submit	Part No.	Description
	ML43-17075-04	288-106



### Mainline Capacitor - 370V Single Oval

**PRODUCT FEATURES**

- HVAC Single Run Capacitor
- Shape: Oval
- Voltage: 370 Volts
- Capacitance (uF): 3
- Dimension A (in.): 1.310
- Dimension B (in.): 2.160
- Dimension C (in.): 2.630
- Connections: 1/4 in. Quick Connects



ML43-25134-06 shown

✓ To Submit	Part No.	Description
	ML43-25134-01	3uF

### Mainline Capacitor - 370V Single Oval

**PRODUCT FEATURES**

- HVAC Single Run Capacitor
- Shape: Oval
- Voltage: 370 Volts
- Capacitance (uF): 5
- Dimension A (in.): 1.310
- Dimension B (in.): 2.160
- Connections: 1/4 in. Quick Connects



ML43-25134-06 shown

✓ To Submit	Part No.	Description
	ML43-25134-02	5uF

### Mainline Capacitor - 370V Single Oval

**PRODUCT FEATURES**

- HVAC Single Run Capacitor
- Shape: Oval
- Voltage: 370 Volts
- Capacitance (uF): 7.5
- Dimension A (in.): 1.310
- Dimension B (in.): 2.160
- Dimension C (in.): 2.630 (max.)
- Connections: 1/4 in. Quick Connects



ML43-25134-06 shown

✓ To Submit	Part No.	Description
	ML43-25134-03	7.5uF

### Mainline Capacitor - 370V Single Oval

**PRODUCT FEATURES**

- HVAC Single Run Capacitor
- Shape: Oval
- Voltage: 370 Volts
- Capacitance (uF): 10
- Dimension A (in.): 1.310
- Dimension B (in.): 2.160
- Dimension C (in.): 2.880 (max.)
- Connections: 1/4 in. Quick Connects



ML43-25134-06 shown

✓ To Submit	Part No.	Description
	ML43-25134-04	10uF

### Mainline Capacitor - 370V Single Oval

**PRODUCT FEATURES**

- HVAC Single Run Capacitor
- Shape: Oval
- Voltage: 370 Volts
- Capacitance (uF): 15
- Dimension A (in.): 1.310
- Dimension B (in.): 2.160
- Dimension C (in.): 4.250 (max.)
- Dimension D (in.): 2.060
- Dimension E (in.): 1.265
- Connections: 1/4 in. Quick Connects



ML43-25134-06 shown

✓ To Submit	Part No.	Description
	ML43-25134-06	15uF

### Mainline Capacitor - 440V Single Oval

**PRODUCT FEATURES**

- HVAC Single Run Capacitor
- Shape: Oval
- Voltage: 440 Volts
- Capacitance (uF): 5
- Dimension A (in.): 1.310
- Dimension B (in.): 2.160
- Dimension C (in.): 2.850 (max.)
- Connections: 1/4 in. Quick Connects



ML43-25134-23 shown

✓ To Submit	Part No.	Description
	ML43-25134-21	5uF

### Mainline Capacitor - 440V Single Oval

**PRODUCT FEATURES**

- HVAC Single Run Capacitor
- Shape: Oval
- Voltage: 440 Volts
- Capacitance (uF): 7.5
- Dimension A (in.): 1.310
- Dimension B (in.): 2.160
- Dimension C (in.): 2.880 (max.)
- Connections: 1/4 in. Quick Connects



ML43-25134-23 shown

✓ To Submit	Part No.	Description
	ML43-25134-33	7.5uF

### Mainline Capacitor - 440V Single Oval

**PRODUCT FEATURES**

- HVAC Single Run Capacitor
- Shape: Oval
- Voltage: 440 Volts
- Capacitance (uF): 10
- Dimension A (in.): 1.310
- Dimension B (in.): 2.160
- Dimension C (in.): 3.880 (max.)
- Connections: 1/4 in. Quick Connects



ML43-25134-23 shown

✓ To Submit	Part No.	Description
	ML43-25134-22	10uF

### Mainline Capacitor - 440V Single Oval

**PRODUCT FEATURES**

- HVAC Single Run Capacitor
- Shape: Oval
- Voltage: 440 Volts
- Capacitance (uF): 15
- Dimension A (in.): 1.310
- Dimension B (in.): 2.160
- Dimension C (in.): 4.750 (max.)
- Connections: 1/4 in. Quick Connects



ML43-25134-23 shown

✓ To Submit	Part No.	Description
	ML43-25134-23	15uF

## Mainline Capacitor - 370V Dual Round

### PRODUCT FEATURES

- HVAC Dual Run Capacitor
- Shape: Round
- Capacitance (1) (uF): 25
- Capacitance (2) (uF): 5
- Voltage (VAC): 370
- Dimension A (in.): 2.000
- Dimension B (in.): 2.120
- Dimension C (in.): 3.156 (max.)
- Connections: 1/4 in. Quick Connects

ML43-25133-36 shown



✓ To Submit	Part No.	Description
	ML43-25133-19	25/5

## Mainline Capacitor - 440V Dual Round

### PRODUCT FEATURES

- HVAC Dual Run Capacitor
- Shape: Round
- Capacitance (1) (uF): 30
- Capacitance (2) (uF): 5
- Voltage (VAC): 440
- Dimension A (in.): 2.000
- Dimension B (in.): 2.120
- Dimension C (in.): 3.940 (max.)
- Connections: 1/4 in. Quick Connects

ML43-25133-36 shown



✓ To Submit	Part No.	Description
	ML43-25133-36	30/5

## Mainline Capacitor - 440V Dual Round

### PRODUCT FEATURES

- HVAC Dual Run Capacitor
- Shape: Round
- Capacitance (1) (uF): 35
- Capacitance (2) (uF): 3
- Voltage (VAC): 440
- Dimension A (in.): 2.500
- Dimension B (in.): 2.620
- Dimension C (in.): 3.640 (max.)
- Connections: 1/4 in. Quick Connects

ML43-25133-30 shown



✓ To Submit	Part No.	Description
	ML43-25133-11	35/3



## Mainline Capacitor - 440V Dual Round

### PRODUCT FEATURES

- HVAC Dual Run Capacitor
- Shape: Round
- Capacitance (1) (uF): 35
- Capacitance (2) (uF): 5
- Voltage (VAC): 440
- Dimension A (in.): 2.500
- Dimension B (in.): 2.620
- Dimension C (in.): 4.750 (max.)
- Connections: 1/4 in. Quick Connects

ML43-25133-30 shown



✓ To Submit	Part No.	Description
	ML43-25133-12	35/5

## Mainline Capacitor - 440V Dual Round

### PRODUCT FEATURES

- HVAC Dual Run Capacitor
- Shape: Round
- Capacitance (1) (uF): 40
- Capacitance (2) (uF): 5
- Voltage (VAC): 440
- Dimension A (in.): 2.500
- Dimension B (in.): 2.620
- Dimension C (in.): 3.640 (max.)
- Connections: 1/4 in. Quick Connects

ML43-25133-30 shown



✓ To Submit	Part No.	Description
	ML43-25133-14	40/5

## Mainline Capacitor - 440V Dual Round

### PRODUCT FEATURES

- HVAC Dual Run Capacitor
- Shape: Round
- Capacitance (1) (uF): 45
- Capacitance (2) (uF): 5
- Voltage (VAC): 440
- Dimension A (in.): 2.500
- Dimension B (in.): 2.620
- Dimension C (in.): 4.250 (max.)
- Connections: 1/4 in. Quick Connects

ML43-25133-30 shown



✓ To Submit	Part No.	Description
	ML43-25133-16	45/5

## Mainline Capacitor - 440V Dual Round

### PRODUCT FEATURES

- HVAC Dual Run Capacitor
- Shape: Round
- Capacitance (1) (uF): 50
- Capacitance (2) (uF): 5
- Voltage (VAC): 440
- Dimension A (in.): 2.500
- Dimension B (in.): 2.620
- Dimension C (in.): 3.940 (max.)
- Connections: 1/4 in. Quick Connects

ML43-25133-30 shown



✓ To Submit	Part No.	Description
	ML43-25133-26	50/5

## Mainline Capacitor - 440V Dual Round

### PRODUCT FEATURES

- HVAC Dual Run Capacitor
- Shape: Round
- Capacitance (1) (uF): 55
- Capacitance (2) (uF): 5
- Voltage (VAC): 440
- Dimension A (in.): 2.500
- Dimension B (in.): 2.650
- Dimension C (in.): 4.200 (max.)
- Connections: 1/4 in. Quick Connects

ML43-25133-30 shown



✓ To Submit	Part No.	Description
	ML43-25133-17	55/5

## Mainline Capacitor - 440V Dual Round

### PRODUCT FEATURES

- HVAC Dual Run Capacitor
- Shape: Round
- Capacitance (1) (uF): 60
- Capacitance (2) (uF): 5
- Voltage (VAC): 440
- Dimension A (in.): 2.500
- Dimension B (in.): 2.620
- Dimension C (in.): 4.750 (max.)
- Connections: 1/4 in. Quick Connects

ML43-25133-30 shown



✓ To Submit	Part No.	Description
	ML43-25133-30	60/5

### Mainline Outdoor Condenser Motor - 208/230 Volts 1 PH 1075 RPM

**PRODUCT FEATURES**

- HVAC Outdoor Condenser Motor
- HP: 1/6
- RPM: 1075 RPM
- Speeds: 1
- Voltage: 208/230 Volts
- Phases: 1 PH
- Frequency (Hz): 60
- Run Capacitor: 10/370
- FLA at 230V (A): 1.20
- Reversible

MLW51-14CJA1-02 shown



✓ To Submit	Part No.	Description
	MLW51-16CJA1-02	1/6 HP

### Mainline Outdoor Condenser Motor – 208/230 Volts 1 PH 1075 RPM

**PRODUCT FEATURES**

- HVAC Outdoor Condenser Motor
- HP: 1/4
- RPM: 1075 RPM
- Speeds: 1
- Voltage: 208/230 Volts
- Phases: 1 PH
- Frequency (Hz): 60
- Run Capacitor: 10/370
- FLA at 230V (A): 1.70
- Reversible

MLW51-14CJA1-02 shown



✓ To Submit	Part No.	Description
	MLW51-14CJA1-02	1/4 HP

### Mainline Outdoor Condenser Motor – 208/230 Volts 1 PH 1075 RPM

**PRODUCT FEATURES**

- HVAC Outdoor Condenser Motor
- HP: 1/3
- RPM: 1075 RPM
- Speeds: 1
- Voltage: 208/230 Volts
- Phases: 1 PH
- Frequency (Hz): 60
- Run Capacitor: 10/370
- FLA at 230V (A): 1.40
- Reversible

MLW51-14CJA1-02 shown



✓ To Submit	Part No.	Description
	MLW51-13CJA1-02	1/3 HP

### Mainline Outdoor Condenser Motor - 208/230 Volts 1 PH 1075 RPM

**PRODUCT FEATURES**

- HVAC Outdoor Condenser Motor
- HP: 1/2
- RPM: 1075 RPM
- Speeds: 1
- Voltage: 208/230 Volts
- Phases: 1 PH
- Frequency (Hz): 60
- Run Capacitor: 10/370
- FLA at 230V (A): 1.70
- Reversible

MLW51-14CJA1-02 shown



✓ To Submit	Part No.	Description
	MLW51-12CJA1-02	1/2 HP

### Mainline Outdoor Condenser Motor – 208/230 Volts 1 PH 1075 RPM

**PRODUCT FEATURES**

- HVAC Outdoor Condenser Motor
- HP: 1/6 - 1/3
- RPM: 1075 RPM
- Speeds: 1
- Voltage: 208/230 Volts
- Phases: 1 PH
- Frequency (Hz): 60
- Run Capacitor: 10/370
- FLA at 230V (A): 1.30
- Reversible

MLW51-14CJA1-02 shown



✓ To Submit	Part No.	Description
	MLW51-MHCJA1-02	1/6 to 1/3 HP

### Mainline Indoor Blower Motor - 120 Volts 1PH 1075 RPM

**PRODUCT FEATURES**

- HVAC Indoor Blower Motor
- HP: 1/4
- RPM: 1075 RPM
- Speeds: 3
- Voltage: 120 Volts
- Phases: 1 PH
- Frequency (Hz): 60
- Run Capacitor: 10/370
- FLA at 230V (A): 3.8
- Reversible

MLW51-14BAA3-02 shown



✓ To Submit	Part No.	Description
	MLW51-14BAA3-02	1/4 HP



**Mainline Indoor Blower Motor - 120 Volts 1PH 1075 RPM**

**PRODUCT FEATURES**

- HVAC Indoor Blower Motor
- HP: 1/3
- RPM: 1075 RPM
- Speeds: 3
- Voltage: 120 Volts
- Phases: 1 PH
- Frequency (Hz): 60
- Run Capacitor: 10/370
- FLA at 230V (A): 5
- Reversible



MLW51-14BAA3-02 shown

✓ To Submit	Part No.	Description
	MLW51-13BAA3-02	1/3 HP

**Mainline Indoor Blower Motor - 120 Volts 1PH 1075 RPM**

**PRODUCT FEATURES**

- HVAC Indoor Blower Motor
- HP: 1/2
- RPM: 1075 RPM
- Speeds: 3
- Voltage: 120 Volts
- Phases: 1 PH
- Frequency (Hz): 60
- Run Capacitor: 10/370
- FLA at 230V (A): 6
- Reversible



MLW51-14BAA3-02 shown

✓ To Submit	Part No.	Description
	MLW51-12BAA3-02	1/2 HP

**Mainline Indoor Blower Motor - 208/230 Volts 3PH 1075 RPM**

**PRODUCT FEATURES**

- HVAC Indoor Blower Motor
- HP: 1/4
- RPM: 1075 RPM
- Speeds: 3
- Voltage: 208/230 Volts
- Phases: 1 PH
- Frequency (Hz): 60
- Run Capacitor: 10/370
- FLA at 230V (A): 1.6
- Reversible



MLW51-14BJA3-02 shown

✓ To Submit	Part No.	Description
	MLW51-14BJA3-02	1/4 HP

### Mainline Indoor Blower Motor - 208/230 Volts 3PH 1075 RPM

**PRODUCT FEATURES**

- HVAC Indoor Blower Motor
- HP: 1/3
- RPM: 1075 RPM
- Speeds: 3
- Voltage: 208/230 Volts
- Phases: 1 PH
- Frequency (Hz): 60
- Run Capacitor: 10/370
- FLA at 230V (A): 2.20
- Reversible

MLW51-14BJA3-02 shown



✓ To Submit	Part No.	Description
	MLW51-13BJA3-02	1/3 HP

### Mainline Indoor Blower Motor - 208/230 Volts 3PH 1075 RPM

**PRODUCT FEATURES**

- HVAC Indoor Blower Motor
- HP: 1/2
- RPM: 1075 RPM
- Speeds: 3
- Voltage: 208/230 Volts
- Phases: 1 PH
- Frequency (Hz): 60
- Run Capacitor: 10/370
- FLA at 230V (A): 2.70
- Reversible

MLW51-14BJA3-02 shown



✓ To Submit	Part No.	Description
	MLW51-12BJA3-02	1/2 HP

### Mainline Indoor Blower Motor - 3/4 HP 120 Volts 3PH 1075 RPM

**PRODUCT FEATURES**

- HVAC Indoor Blower Motor
- HP: 3/4
- RPM: 1075 RPM
- Speeds: 3
- Voltage: 120 Volts
- Phases: 1 PH
- Frequency (Hz): 60
- Run Capacitor: 15/370
- FLA at 230V (A): 9.75
- Reversible

MLW51-34BAA3-02 shown



✓ To Submit	Part No.	Description
	MLW51-34BAA3-02	3/4 HP

## Mainline Indoor Blower Motor -3/4 HP 208/230 Volts 3PH 1075 RPM

### PRODUCT FEATURES

- HVAC Indoor Blower Motor
- Fits a variety of common aftermarket applications
- HP: 3/4
- RPM: 1075 RPM
- Speeds: 3
- Voltage: 208/230 Volts
- Phases: 1 PH
- Frequency (Hz): 60
- Run Capacitor: 15/370
- FLA at 230V (A): 4
- Reversible



MLW51-34BJA3-02 shown

✓ To Submit	Part No.	Description
	MLW51-34BJA3-02	3/4 HP

## Mainline Universal Blower Motor - 1/2 - 1/6 HP 208/230 Volts 4PH 1075 RPM

### PRODUCT FEATURES

- HVAC Universal Blower Motor
- Fits a variety of common aftermarket applications
- HP: 1/2 - 1/6
- RPM: 1075 RPM
- Speeds: 4
- Voltage: 230 Volts
- Phases: 1 PH
- Frequency (Hz): 60



MLW51-MHBJA4-02 shown

✓ To Submit	Part No.	Description
	MLW51-MHBJA4-02	1/2 TO 1/6 HP

## Mainline Universal Blower Motor -1/2 - 1/6 HP 115 Volts 4PH 1075 RPM

### PRODUCT FEATURES

- HVAC Universal Blower Motor
- Fits a variety of common aftermarket applications
- HP: 1/2 - 1/6
- RPM: 1075 RPM
- Speeds: 4
- Voltage: 115 Volts
- Phases: 1 PH
- Frequency (Hz): 60



MLW51-MHBAA4-02 shown

✓ To Submit	Part No.	Description
	MLW51-MHBAA4-02	1/2 TO 1/6 HP

**Mainline Condenser Motor - 1/5 HP**  
**208/230 Volts 1PH 1075 RPM**

**PRODUCT FEATURES**

- HVAC Condenser Motor
- Fits a variety of common aftermarket applications
- Approved as OEM replacement parts for Rheem models
- HP: 1/5
- RPM: 1075 RPM
- Speed: 1
- Voltage: 208/230 Volts
- Phase: 1 PH
- Frequency (Hz): 60
- Run Capacitor: 3/370 (230V), 5/370 (208V)
- FLA at 230V (A): 1.3
- Reversible

ML51-23055-11 shown



✓ To Submit	Part No.	Description
	ML51-23055-11	1/5 HP

**Mainline Rescue Blower Motor - 1/5 - 3/4 HP**  
**120 Volts 4PH 1075 RPM**

**PRODUCT FEATURES**

- HVAC Rescue Indoor Blower Motor
- Replaces a range of different horsepower ratings and applications
- HP: 1/5 - 3/4
- RPM: 1075 RPM
- Speeds: 4
- Voltage: 120 Volts
- Phases: 1 PH
- Frequency (Hz): 60
- Run Capacitor: 20/370
- FLA at 230V (A): 8.10
- Reversible
- 36 inch leads

ML5470 shown



✓ To Submit	Part No.	Description
	ML5470	1/5 TO 3/4 HP



### WiFi Selectable Thermostat, Universal

**PRODUCT FEATURES**

- 8 sq in temperature and setpoint display
- 7 Day, 5/1/1 or NP
- Separate heating and cooling swing adjustments
- Customizable staging logic
- Occupied-unoccupied programming
- Always on display light option
- Auto changeover
- Fully customizable in App
- Setpoint limits
- Hardwire Only
- 5 Year Warranty



MLT855i shown

✓ To Submit	Part No.	Description
	MLT855i	GE: 2H/2C HP: 4H/2C

### WiFi Programmable Thermostat, Single Stage

**PRODUCT FEATURES**

- 4 sq in temperature and setpoint display
- 7 Day, 5/1/1 or NP
- Programmable through app
- Setpoint limits
- Separate heating and cooling swing adjustments
- 5 minute compressor delay protection
- Hardwire Only
- 5 Year Warranty



MLT701i shown

✓ To Submit	Part No.	Description
	MLT701i	GE/HP: 1H/1C

### Selectable Thermostat w/ Humidity Control - Res, Lt Commercial 115

**PRODUCT FEATURES**

- 8 sq in temperature and setpoint display
- 7 Day, 5/1/1 or NP
- Humidity & Dehumidity Control
- Remote Sensor Capable
- Setpoint limits
- Remote sensing
- Set dual fuel balance points
- Compatible with indoor remote sensors
- Auto changeover
- IAQ fan settings
- Pre-occupancy purge
- Battery or Hardwire
- 5 Year Warranty



MLT855SH shown

✓ To Submit	Part No.	Description
	MLT855SH	GE: 2H/2C HP: 5H/2C

## Selectable Thermostat - Res, Lt Commercial

### PRODUCT FEATURES

- 8 sq in temperature and setpoint display
- 7 Day, 5/1/1 or NP
- Separate heating and cooling swing adjustments
- Customizable staging logic
- Occupied-unoccupied programming
- Always on display light option
- Auto changeover
- Setpoint limits
- Battery or Hardwire
- Easy access battery compartment
- 5 Year Warranty



MLT855 shown

✓ To Submit	Part No.	Description
	MLT855	GE: 2H/2C HP: 3H/2C

## Selectable Thermostat w/ Filter Change, Universal

### PRODUCT FEATURES

- 6 sq in temperature and setpoint display
- 7 Day, 5/1/1 or NP
- Filter change indicator
- Setpoint limits
- Separate heating and cooling swing adjustments
- Conventional option
- Customizable staging logic
- Schedule copy features
- Programmable Fan
- Battery or Hardwire
- Easy access battery compartment
- 5 Year Warranty



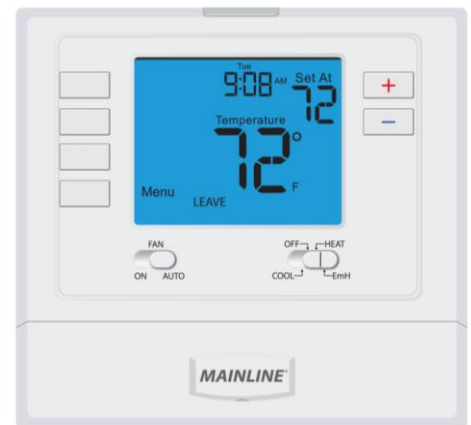
MLT755 shown

✓ To Submit	Part No.	Description
	MLT755	GE: 2H/2C HP: 3H/2C

## Selectable Thermostat w/ Filter Change, Conventional or Heat Pump

### PRODUCT FEATURES

- 4 sq in temperature and setpoint display
- 7 Day, 5/1/1 or NP
- Filter Change Reminder
- Setpoint limits
- Separate heating and cooling swing adjustments
- Customizable staging logic
- Conventional option
- Schedule copy features
- Battery or Hardwire
- Easy access battery compartment
- 5 Year Warranty



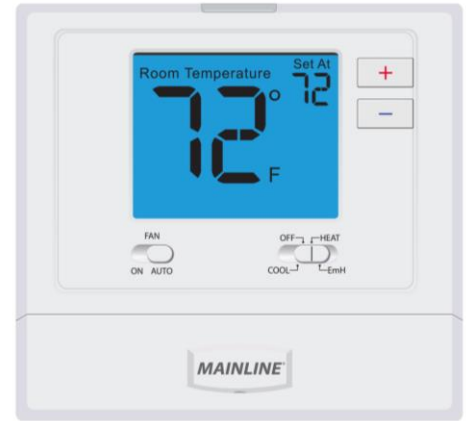
MLT725 shown

✓ To Submit	Part No.	Description
	MLT725	GE: 1H/1C HP: 2H/1C

## Selectable Thermostat, Conventional or Heat Pump

### PRODUCT FEATURES

- 4 sq in temperature and setpoint display
- 7 Day, 5/1/1 or NP
- Setpoint limits
- Separate heating and cooling swing adjustments
- Customizable staging logic
- Conventional option
- Battery or Hardwire
- Easy access battery compartment
- 5 Year Warranty



MLT721 shown

✓ To Submit	Part No.	Description
	MLT721	GE: 1H/1C HP: 2H/1C

## Selectable Thermostat, Single Stage

### PRODUCT FEATURES

- 4 sq in temperature and setpoint display
- 7 Day, 5/1/1 or NP
- Setpoint limits
- Separate heating and cooling swing adjustments
- 5 minute compressor delay protection
- Schedule copy features
- Battery or Hardwire
- Easy access battery compartment
- 5 Year Warranty



MLT705 shown

✓ To Submit	Part No.	Description
	MLT705	GE/HP: 1H/1C

## Non-Programmable Thermostat, Single Stage

### PRODUCT FEATURES

- 4 sq in temperature and setpoint display
- Setpoint limits
- Separate heating and cooling swing adjustments
- 5 minute compressor delay protection
- Easy access battery compartment
- Battery or Hardwire
- 5 Year Warranty



MLT701 shown

✓ To Submit	Part No.	Description
	MLT701	GE/HP: 1H/1C

## Non-Programmable Thermostat, Single Stage

### PRODUCT FEATURES

- 4 sq in temperature and setpoint display
- Heating and cooling swing adjustments
- Setpoint limit range from 25°F to 99°F (Meets building codes for garage applications)
- Room temperature calibration
- Battery or Hardwire
- Easy access battery compartment
- 5 Year Warranty



MLT771 shown

✓ To Submit	Part No.	Description
	MLT771	GE: 1H or 1C

## Programmable Thermostat, Conventional or Heat Pump

### PRODUCT FEATURES

- 2 sq in temperature and setpoint display
- 7 Day or 5/1/1
- Setpoint limits
- Separate heating and cooling swing adjustments
- 5 minute compressor delay protection
- Room temperature calibration adjustments
- Battery or Hardwire
- Easy access battery compartment
- 2 Year Warranty



MLT625-2 shown

✓ To Submit	Part No.	Description
	MLT625-2	GE: 1H/1C HP: 2H/1C

## Programmable Thermostat, Single Stage

### PRODUCT FEATURES

- 2 sq in temperature and setpoint display
- 7 Day or 5/1/1
- Setpoint limits
- Separate heating and cooling swing adjustments
- 5 minute compressor delay protection
- Battery or Hardwire
- Easy access battery compartment
- 2 Year Warranty



MLT605-2 shown

✓ To Submit	Part No.	Description
	MLT605-2	GE/HP: 1H/1C



### Non-Programmable Thermostat, Convention or Heat Pump

**PRODUCT FEATURES**

- 2 sq in temperature and setpoint display
- Setpoint limits
- Separate heating and cooling swing adjustments
- 5 minute compressor delay protection
- Room temperature calibration adjustments
- Battery or Hardwire
- Easy access battery compartment
- 2 Year Warranty

MLT621-2 shown



✓ To Submit	Part No.	Description
	MLT621-2	GE: 1H/1C HP: 2H/1C

### Non-Programmable Thermostat, Single Stage

**PRODUCT FEATURES**

- 2 sq in temperature and setpoint display
- Setpoint limits
- Separate heating and cooling swing adjustments
- Easy wire color coded terminal blocks
- Battery or Hardwire
- Easy access battery compartment
- 2 Year Warranty

MLT601-2 shown



✓ To Submit	Part No.	Description
	MLT601-2	GE/HP: 1H/1C

### Non-Programmable Thermostat, Electric Heat

**PRODUCT FEATURES**

- Ambient Temperature Display
- No Batteries Necessary
- Simple Single Dial Control
- Great For Baseboard Heaters
- 2 Year Warranty

MLT501ML2 shown



✓ To Submit	Part No.	Description
	MLT501ML2	1H