

Hex Rod Coupling Nut Zinc Plated

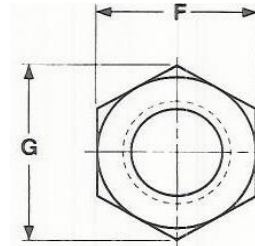
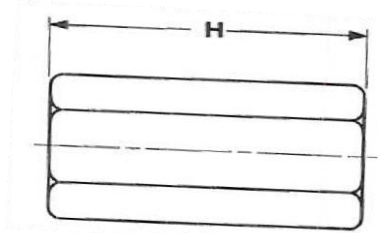
Product Specifications



MAINLINE

PRODUCT FEATURES

- Zinc Plated
- 1010 - 1018 or Equivalent Steel



Basic Diameter		F			G		H		
		Width Across Flats			Width Across Corners		Thickness of Hex Nuts		
		Basic	Min	Max	Min	Max	Basic	Min	Max
1/4-20	0.2500	3/8	0.365	0.375	0.416	0.433	7/8	0.86	0.89
5/16-18	0.3125	1/2	0.489	0.500	0.557	0.577	7/8	.086	0.89
3/8-16	0.3750	1/2	0.489	0.500	0.557	0.577	1-1/8	1.11	1.13
1/2-13	0.5000	5/8	0.613	0.625	0.698	0.722	1-1/4	1.24	1.26
5/8	0.6250	13/16	0.782	0.813	0.891	0.939	2-1/8	2.10	2.14
3/4	0.7500	1"	0.963	1.000	1.097	1.155	2-1/4	2.22	2.27
1	1.0000	1-3/8	1.325	1.375	1.511	1.588	2-3/4	2.72	2.78

ANSI/ASME B18.2.2

Material	1010 - 1018 or Equivalent Steel.
Hardness	Rockwell B68 - C32
Tensile Strength	60,000 psi. Minimum

Warranty: See warranty information for more details.

All dimensions listed are nominal. MAINLINE® reserves the right to make product and material changes at any time without notice.

Contact your sales representative for more information or visit our website at mainlinecollection.com

Revised 10-2016