

# 6036STT – EVERYDAY TUB/SHOWERS

60 x 36 x 80 inches



## FEATURES

- Tub-shower
- Subway tile finish
- Ergonomic backrest
- Slip-resistant textured bottom
- Left or right hand drain
- AcrylX™ applied acrylic surface
- Lifetime limited warranty

## OPTIONS

- Grab bar reinforcement
- Factory installed assisted care grab bars
- Designer drain, waste & overflow

## AQUATIC ADVANTAGE

- National distribution
- 7 manufacturing facilities
- Private fleet
- Centralized customer service
- Field support

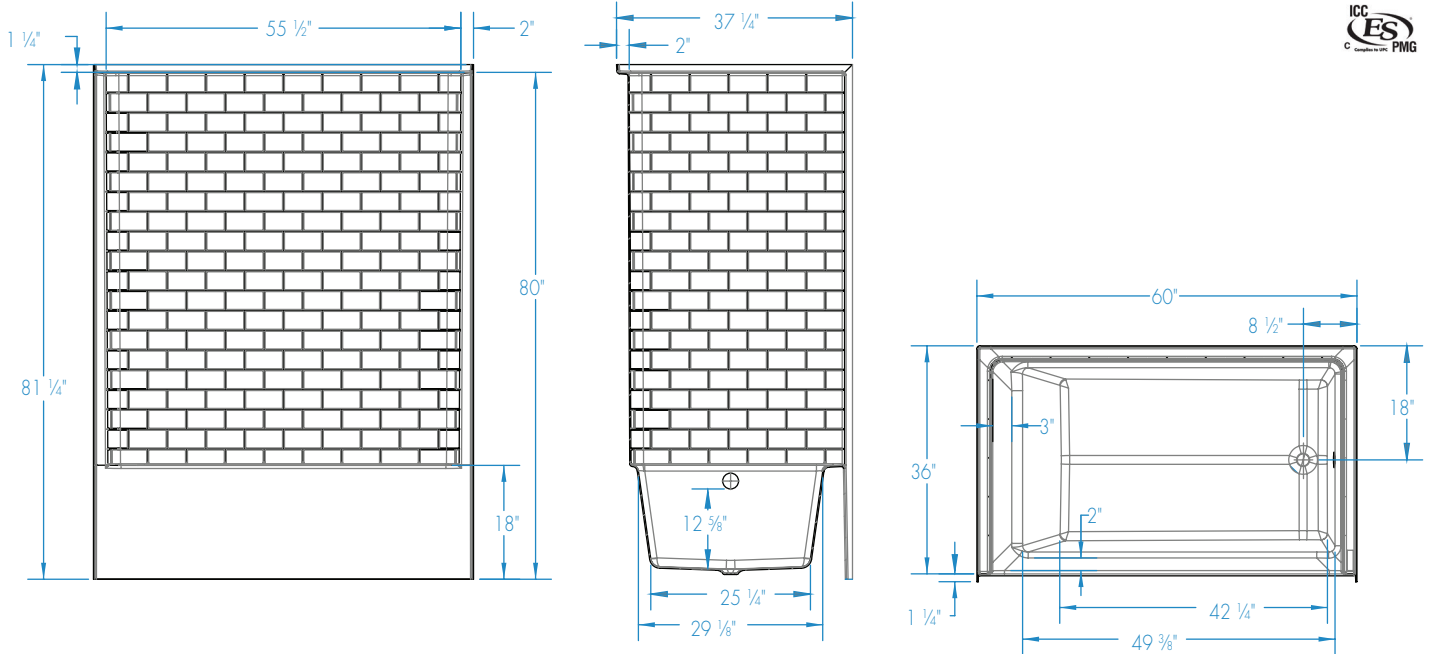
## COLOR OPTIONS

Stock	Upgraded	Premium
White	Almond Biscuit/Linen Bone	Black Mexican Sand Sand Bar Sterling Silver



# 6036STT

60 x 36 x 80  
inches



**FEATURES** lbs      Dimensional Tolerance  $\pm 3/8"$ . Dimensions needed for site preparation should be measured from the unit. Aquatic assumes no responsibility for preparatory work.

Model #	Material	Wall Finish	Jets	Motor	Controls	Drain	Net Wt.	Pkg. Wt.
Tub-Shower #6036STT	AcrylX™	Subway Tile	-	-	-	LH or RH	120	125

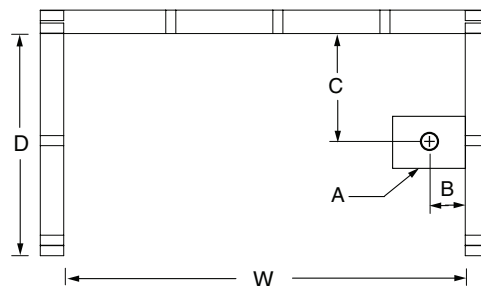
## DIMENSIONS

Specifications	inches
Width: Overall / Net	60
Depth: Overall / Net	37 1/4 / 36
Height: Overall / Net	81 1/4 / 80
Enclosure Opening	55 1/2
Skirt Height	18
Drain Rough-In (from Back Wall)	18
Drain Rough-In (from Side Wall)	8 1/2
Drain: Diameter / Clearance	2 / 3/4

## FRAMING DIMENSIONS

 inches

Type	D Depth	W Width	H Height	A	B	C
Alcove	37 1/2	60 1/8	-	Box Out	8 1/2	18



## SUMP DATA

Top of Drain to Bottom of Overflow	Capacity to Overflow gal	Min. Operating Capacity gal	WIDTH @ centerline		DEPTH @ centerline	
			Top	Bottom	Top	Bottom
12 3/8	61	-	49 3/8	42 1/4	29 1/8	25 1/4